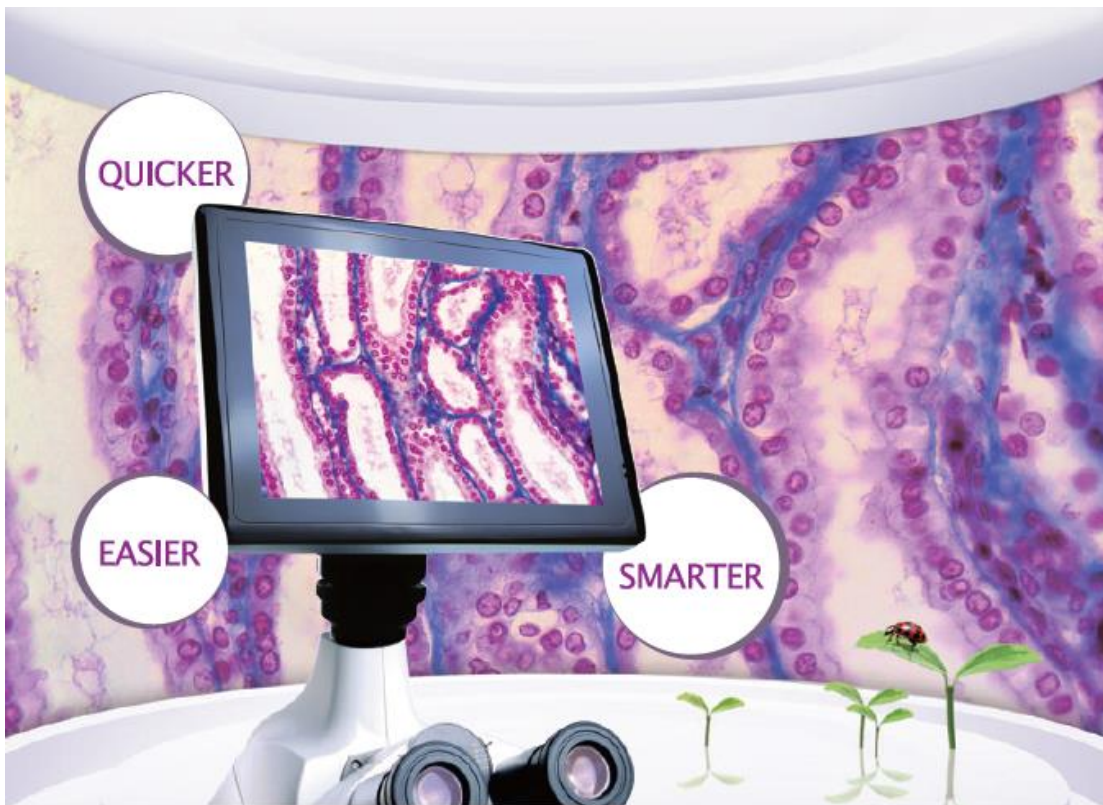


CellPad E

As is the next generation "ALL-IN-ONE" microscope camera, Cellpad E makes great user experience of microscopy itself by utilizing build-in software and build-in camera as well as build -in screen. Cellpad E makes microscopy imaging easier, quicker and smarter.



Preview resolution
1024x768



Powerful Dual
Core 1,5GHz CPU



2MP color camera



Android 4,1,1,
thousands of APPs.



Standard adapter
with large filed of view



LCD screen
Vertical 360° rotatable



HDMI output



USB2.0 output



Mini SD Card storage



For Biological microscope



For Stereo microscope



For telescope

High Quality LCD Screen

Thanks to 1024×768 high resolution screen, CellPad E has great color fidelity and offers smooth images. With up to 5-point multi-touch screen, the CellPad E control is just at your fingertips.



CellPad E uses the same quality LCD screen as Apple iPad. Latest LCD technique significantly improves the screen brightness, coupled with IPS technology to reduce the light reflection, you can get a same sharp and clear screen from any angle.



Intelligent Operation

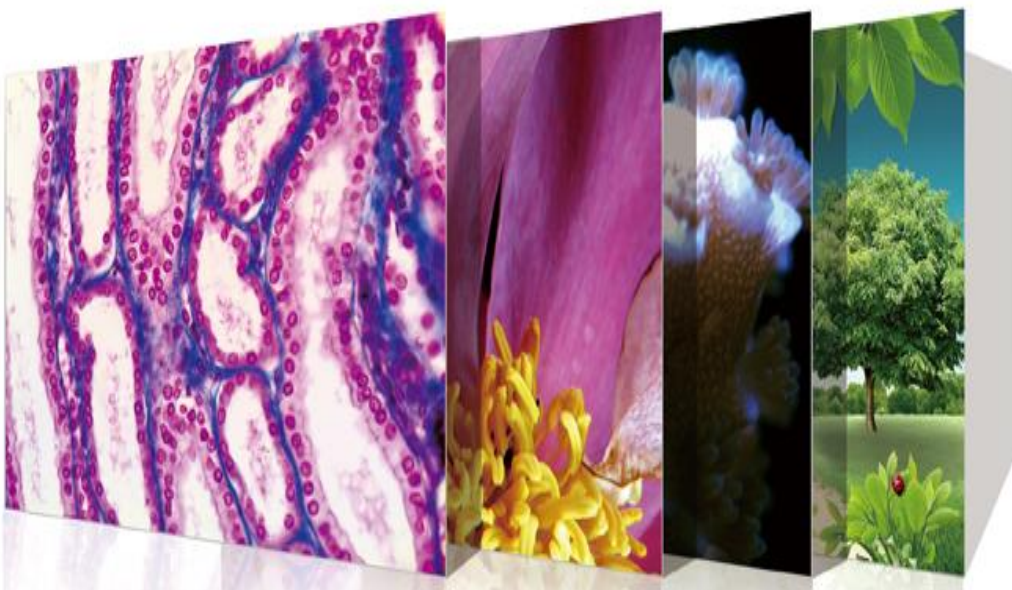
Donot need to install driver or software, nor system compatible issue be concerned, but just starting camera, the live image presents in front of you immediately.

You don't even worry about any parameter adjustment. CellPad E takes care of all the parameters, like white balance, exposure time etc smartly. Simply one-touch on the screen to document your pictures to system memory or to your external storage devices like mini SD Card or USB devices.



Reliable Built-in Camera

Integrated with 2MP camera, CellPad E allows high speed image acquisition. You also can do the target searching, focusing through the screen easily instead of the microscope eyepieces. Furthermore, CellPad E utilizes the special-designed image processing chip for the built-in cameras. CellPad E focuses on image dynamic range improvement and image detail quality. It provides solid guarantee for microscopy imaging applications.



CellPad E Specifications :

Display	8" High-resolution(1024×768) Color LCD Touch Screen
Built-in Camera	2.0 Megapixel Color Camera 10fps @ 1024×768, 20fps @ 640×480
Built-in Software	Capture/Measurement App
Mechanical Structure	LCD Screen 360° @ horizontal rotatable LCD Screen 90° @ vertical rotatable
Operating System	Android 4.1.1
CPU	Dual-core 1.5GHz
Memory	1G (DDR3)
Storage	Internal 5GB or External Mini SD Card
HDMI Display	Yes
Output Ports	1x HDMI Port 1x USB 2.0 Port 1x Mini USB 2.0 Port
Power Supply	Input: AC 110V-220V Output: DC 5V

ALL-in-ONE Package

1. CellPad Main Body
2. External Power Adaptor
3. Carton Shockproof Packaging

Optional Accessories

1. 0.35X Reduce Lens for
2.0 Megapixel Camera



2. 2GB Mini SD Card



3. 2 Meter HDMI Cable



KOPTIC 한국광학

한국광학(KOREA OPTIC COMPANY)

Address: Rm. 030 265-10 Yangjae-Dong, Seocho-Gu, Seoul, 137-130, Korea

Tel: +82-2-2038-8854 Fax: +82-2-6499-0868

Website: www.koptic.co.kr Email: info@koptic.co.kr